

## Top Stories This Week

- March CPI Inflation @ 4.83% vs 5.18% (MOM). February IIP @ 2.0% vs -1.5% (MOM)
- Tata Steel says -Q4 hot metal production up 1.5 percent at 2.71 million tonnes (MT) (YoY)
- Coal India cuts prices by up to 40% as production improves: ET
- Bharti Airtel acquires 4G spectrum rights from Aircel for 8 circles for Rs 3,500 crore.
- Rupa & Co says unit acquires license from French connection to sell 'FCUK' products.
- Tata Steel UK To Sell Long Products Europe Biz To Greybull Capital
- Sun Life Financial has increased its stake in Birla Sun Life Insurance, from 26% to 49%, at an investment of Rs.1,664 cr
- BPL To Buy PIL's 26% Stake In Petronet CCK For `78.6 Cr. Board Approves Raising FII Limit To 49% From 24%
- Wipro Board To Consider Buyback Proposal On April 20
- L&T Files DRHP For L&T Infotech With SEBI. Offer Comprises Of Offer For Sale Of up to 1.75 Cr shares.
- Kaveri Seed's New Plant At Telangana Commences Operations. Invested `21 Cr In New Telangana Plant

## Weekly Indices Change

Index	Close	Prev Close	Chg. (%)
SENSEX	25626	24673	3.86
NIFTY	7850	7555	3.90
MIDCAP	10916	10594	3.04
SMLCAP	10943	10664	2.62
METAL	7656	7467	2.53
OIL&GAS	9396	9099	3.26
AUTO	18748	17463	7.36
TECK	6073	5923	2.53
BANKEX	18542	17695	4.79
IT	11283	11064	1.98
FMCG	7820	7603	2.85
HC	15494	15217	1.82
PSU	6186	6028	2.62
CD	11693	11348	3.04
POWER	1872	1800	4.00
CG	13230	12794	3.41
REALTY	1281	1243	3.06

## Global Indices

DOW	17897	17576	1.83
NASDAQ	4938	4850	1.81
FTSE	6343	6204	2.24
NIKKEI	16848	15821	6.49
HANGSENG	21316	20370	4.64

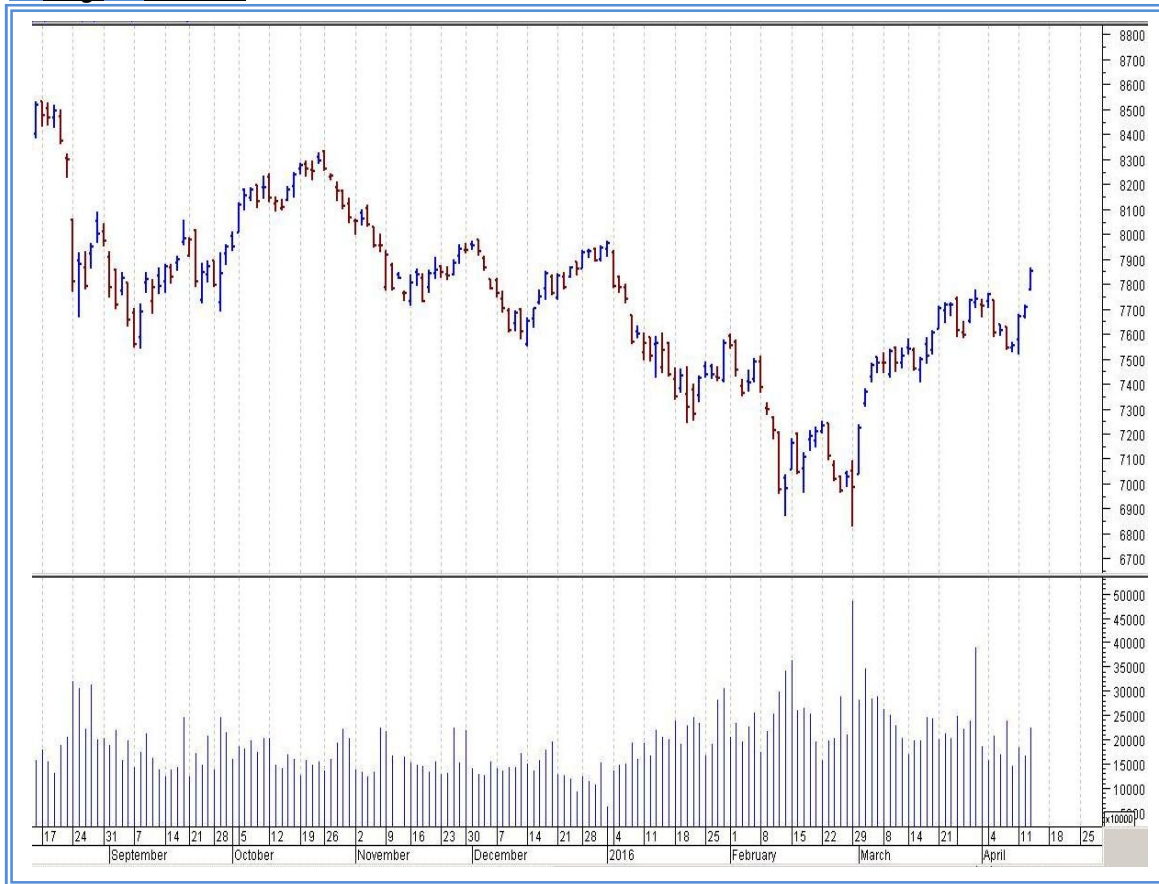
## Top Gainers Weekly

Scrip	Price	% Chg
Sagar Cements	594.75	48.46
RS Software (India)	116.70	40.26
A2Z Infra Engineer	26.90	29.95
Insecticides (India)	418.95	25.85
NCL Industries	117.20	23.82

## Top Losers Weekly

Scrip	Price	% Chg
G M Breweries Ltd.	811.10	20.90
Ashoka Buildcon Ltd.	141.00	16.86
Ipca Laboratorie	493.10	11.22
Hind. Zinc	165.95	11.14
Radico Khaitan Ltd.	87.80	8.64

## Nifty Corner



Support & Resistance						
S3	S2	S1	Nifty	R1	R2	R3
7600	7650	7700	7850	7950	8050	8150
Moving Averages						
20DMA		50DMA		100DMA		200DMA
7385		7365		7605		7905

## Market Commentary

Indian equity markets registered strong gains in a truncated trading week on strong global cues like stronger-than-expected China trade data for March and easing of Japanese yen against the dollar after a recent surge. Also, a batch of positive domestic factors such as forecast of good rains during the June-September 2016 southwest season, further easing of consumer price inflation raising hopes of further rate cut from the Reserve Bank of India and rebound in industrial production aided rally on the domestic bourses. The barometer index, the S&P BSE Sensex, reclaimed the psychologically important 25,000 level. The Sensex surged 3.86%. The Nifty 50 index jumped 3.9%. The BSE Mid-Cap index rose 3.03%. The BSE Small-Cap index rose 2.61%. Both these indices underperformed the Sensex. For the next week Nifty likely to trade in the range between 7950 – 8050 in the upper side and 7700 – 7650 in the lower side.

Stocks at 52 wk High

Scrip	Cmp
Ashok Leyland	110.35
Bajaj Finance	7430.40
Can Fin Homes	1308.75
GIC Housing Fin	274.25
Hero Motocorp	3148.05

Stocks at 52 wk Low

Scrip	Cmp
Arvind Infra	91.30
ESS DEE	97.35
Ipca Labs	493.10
JK Bank	58.80
Sreeleathers	108.80

FII Activity

Date	Figures in crore
11/04	107.23
12/04	307.72
13/04	644.27
14/04	--
15/04	--
NET	1059.22

DII Activity

Date	Figures in crore
11/04	303.88
12/04	-61.74
13/04	269.89
14/04	--
15/04	--
NET	512.03

Weekly Stock Idea

Scrip	B/S	Cmp	Tgt
RELIANCE	B	1066	1105
M&M	B	1332	1385
BAJFINANCE	B	7400	7825
AMARAJABAT	B	900	945
FORTIS	B	180	205

Buy on dips & Sell on rise with Stop-loss of 3%

Volume Breakout Stocks

Scrip	Cmp
Shalimar Paints	131.25
Munjal Auto Ind	85.95
City Union Bank	97.00
Atlas Cycles	210.80
Adani Trans	34.70

Week Ahead

MAJOR RESULTS/AGM MEETING THIS WEEK:

18 APR: TCS, MINDTREE, LICHSGFIN

19 APR: CRISIL, GRUH, MASTEK

20 APR: WIPRO, JAYBARMARU, SUPPETRO

21 APR: INDUSINDBK, HINDZINC,

22 APR: SASKEN, HDFCBANK, CAIRN

**VISIT US AT: [WWW.INDIRATRADE.COM](http://WWW.INDIRATRADE.COM)**

**Disclaimer**

This report is for private circulation within the Indira Group. This report is strictly confidential and for information of the selected recipient only and may not be altered in any way, transmitted to, copied or distributed, in part or in whole, to any other person or to the media or reproduced in any form. This report should not be construed as an offer or solicitation to buy or sell any securities or any interest in securities. It does not constitute a personal recommendation or take into account the particular investment objectives, financial situations, or any such factor. The information, opinions estimates and forecasts contained here have been obtained from, or are based upon, sources we believe to be reliable, but no representation of warranty, express or implied, is made by us to their accuracy or completeness. Opinions expressed are our current opinions as of the date appearing on this material only and are subject to change without notice.